



4 Band VDSL 24-Ports Managed IP DSLAM with 2 Giga Ethernet Ports

General Description

The VS-2400S is a VDSL IP DSLAM that aggregates 24 lines of 4-band Very-High-Data-Rate Digital Subscriber Line (VDSL) up to 50 Mbit/s into Giga Ethernet uplinks for high-speed data/Internet services. Based on QAM-based 4-band VDSL technologies, VS-2400S extends data service with line rate of solution for services such as remote lecturing, telemedicine, video conferencing, Video-on-Demand (VoD), IP-TV etc. Internet access, and other various high-speed data applications. When the number of subscribers increases, the second uplink fast Ethernet interface can be used to daisy chain to another VS-2400S. Alternatively, multiple VS-2400S can be connected to another LAN switch to form a two-tier configuration, thus supporting a lot more subscribers. The VS-2400S is an ideal solution for delivering cost-effective, high-performance broadband/multimedia services to Multi-Tenant Units (MTUs) or Multi-Dwelling Units (MDUs) such as hotels, campus, hospitals and telecom.

Key Features & Benefits

- Supports 5M/15M/25Mbps (50 Mbit/s full duplex) per port symmetrical bandwidth over phone wiring with long driver capable up to 1.7/1.1/0.6Km with auto speed.
- Supports GARP/GVRP IEEE-802.1p/q VLAN, IEEE 802.1q tagging VLAN, IEEE 802.1v protocol VLAN, port base VLAN.
- Supports quality of phone wiring detected with SNR (Signal to Noise Ratio) indications
- Supports QOS IEEE-802.1p
- Supports Multicast IP table/IGMP v2 with 512 groups
- Supports LACP IEEE-802.3ad Port Trunking (Link aggregation)
- Supports IEEE 802.1d Spanning trees for MAC bridge with redundant link
- Supports port Mirroring (Sniffer) and Broadcast Storm filtering
- Supports port security with MAC address filtering
- Supports Web Base and Telnet for remote management
- Supports SNMP v1 RFC-1493 Bridge MIBs, RFC-1643 Ethernet MIB, RFC-1213 MIB II, RubyTech Enterprise MIB(Fan and Temperature management)
- Supports RMON groups 1 (Statistics), 2 (Alarm), 3 (Event), 9 (History)
- Supports TFTP/XMODEM for firmware upgrade
- Supports In-Band/Out-of-Band Management
- Cascading up to 8 Units along with a Gigabit Switch
- Spectral compatibility with XDSL, ISDN (2B1Q/4B3T), HomePNA



VS-2400S VDSL 24-Port Switch with 2 Gigabit Ethernet Ports



Also available as Bundle with VC-112RT VDSL Modems

The real standard compliant VDSL solution

**Details under:
www.rubytech-brasil.ws**

4 Band VDSL 24-Ports Managed IP DSLAM with 2 Giga Ethernet Ports

Product Specification

Standard: IEEE802.3, IEEE802.3u, IEEE802.3ab, Compliant with ETSI, ITU, ANSI

Interface: 2 * RJ-45 10/100/1000 Mbit/s Ethernet ports
24 * RJ-21 connector for VDSL connection
24 * RJ-21 connector for POTS/ISDN connection

Flow control: Full duplex: IEEE 802.3x Half duplex: Back pressure

MAC address table: 6K Entries

LED indication: Power and POST Link/Active/Speed Status for Ethernet port Link for VDSL port

VDSL Frequency Spectrum: Transmitter: 900 KHz ~ 3.9MHz
Receiver: 4MHz & 7.9MHz

POTS/ISDN pass filter Spectrum: 0 ~ 630Khz

Operating Temperature: 0°C ~ 50°C

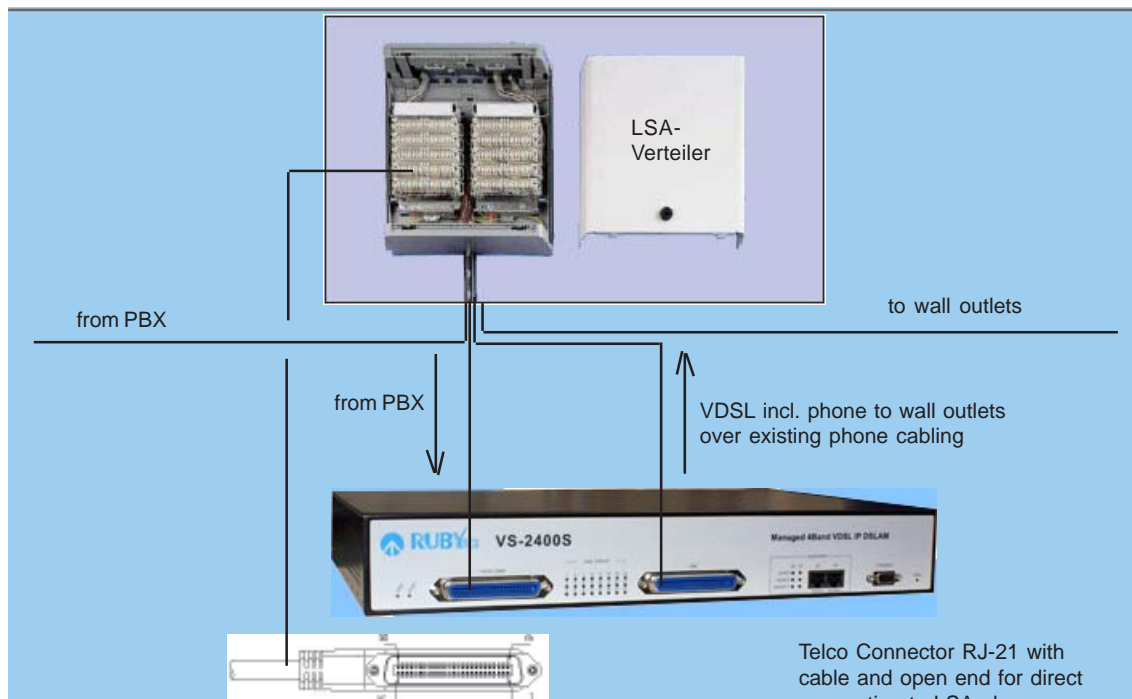
Storage Temperature: -20°C ~ 65°C

Humidity: 10 to 90% (non-condensing)

Dimensions: 434 x 299 x 66 mm



VS-2400S with remote VC-112 RT



The information given in this document shall in no event be regarded as a guarantee of conditions or characteristics. With respect to any examples or hints given herein, any typical values stated herein and/or any information regarding the application of the device, RubyTech Deutschland GmbH hereby disclaims any and all warranties and liabilities of any kind, including without limitation warranties of non-infringement of intellectual property rights of any third party. In the interest of improving internal design, operational function, and/or reliability, RubyTech reserves the right to make changes to the products described in this document without notice. RubyTech does not assume any liability that may occur due to the use or application of the product(s) or circuit layout(s) described herein. Copyright ©2007 by RubyTech Deutschland GmbH All rights reserved.

Order No.: 85-TELCO/2

 **RUBYTECH**
Deutschland GmbH
Networking & Communications
Mühlenstrasse 18 · 53909 Zülpich
Phone 02252-950103 Fax 02252-950104
www.rubytch.de info@rubytch.de